

Lever House Primary School



Spring

Understanding the World

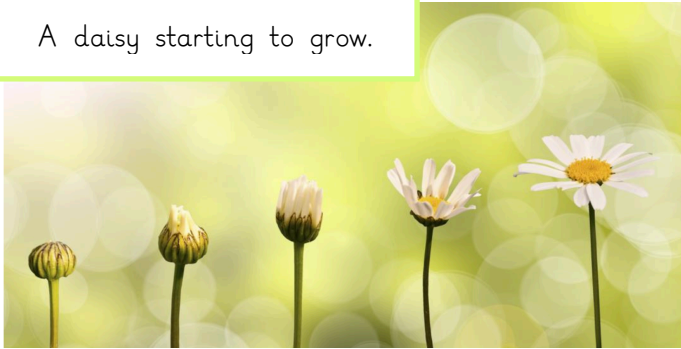
Strand: The Natural World

Classes: Ash and Beech

What I should already know:

- Leaves begin fall off the trees in autumn
- Some trees are bare in winter
- It is cold in winter

A daisy starting to grow.



Sticky Knowledge:

Trees that have lost their leaves start to grow them back.

Some plants begin to grow in the spring.

Spring feels warmer than winter.

Chicks, lambs and piglets are born during spring.



Bees start to appear again.

Key Vocabulary:

Blossom: to begin to grow flowers.

Leaf: the flat part of a plant.

Spring: a season that is between winter and summer.

What I will be able to answer (Learning Questions):

- What do trees look like during spring?
- What happens to plants during spring?
- What does spring feel like?
- Which animals have babies during spring?
- What special events happen during spring?

Useful Links:

<https://www.bbc.co.uk/bitesize/articles/zrmw7yc>



Animals born during spring time..



A tree during early spring.