

Lever House Newsletter

Updating you with our school news

*Welcome.....Bienvenido.....Mwaiseni.....خوش آمدید.....
Dobrodošli.....Välkomna.....مرحباً.....欢迎.....добре
дошли...Vitaite....Bienvenue....Chào mừng*

School News

Merry Christmas

A huge thank you to all of our families for their kind donations towards our Christmas Tombola, Mission Christmas and to help fund this year's pantomime. It has been an exciting month in school and has felt extremely festive with all the music and songs.



It was so lovely to see so many of you attend our EYFS and KS1 nativities we're sure you enjoyed them as much as we did. We certainly have some budding stars! We'd like to wish all our families a Merry Christmas and a very happy and healthy New Year.

Next Term's Learning

Please make sure you head to our website www.leverhouse.net and look at your child's class page, under 'Our Blogs', where you will find next term's learning. You will find an overview of all learning that will take place and a copy of the topic Knowledge Organisers. The pages also have a copy of your child's home learning, spellings and mental maths practise to use for reference.



Emma Cooper
Headteacher
head@leverhouse.net

Tel: (01772)
424268



Please can we remind all parents/carers that we are a **nut free school**.

1

LEARNING

2

CREATIVITY

3

FUN!

EYFS - The Big, Little Nativity

Ash and Beech Class were absolutely fantastic in their performance of *The Big, Little Nativity*. They retold the Christmas story beautifully, showing great confidence, enthusiasm and teamwork throughout. The children sang their songs with big smiles and performed their actions with pride, clearly enjoying every moment on stage. Their hard work really shone through and they brought lots of festive joy to everyone watching.



KS1- Tinsel and Tea-Towels

The children had a fantastic time rehearsing and performing our Christmas production, *Tinsel & Tea-Towels*. The show gave a fun, behind-the-scenes glimpse, of a school preparing to put on their own nativity, after previously having it funded by a local millionaire. The children performed with confidence, enthusiasm and lots of festive cheer, making it a thoroughly enjoyable performance for all.



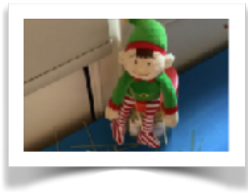
Christmas Lunch

A huge thank you to our wonderful kitchen staff for all their hard work in preparing such a delicious festive feast. Everyone thoroughly enjoyed their lunch — and, of course, pulling their Christmas crackers!



revel our Pesky Elf!

revel has been back with force, getting us all in the Christmas spirit and setting us some challenges in our classes to help us build our resilience. Rowan Class challenge was using cooperative teamwork and resilience, to create a strong sleigh for Father Christmas. They had to put their DT skills into action, choosing the strongest joints for their structures. They then tested them to see whose would survive a crash landing!



KS1 Explorers Day

KS1 enjoyed an exciting Explorers Day, beginning with receiving their explorer lanyards, boarding a “plane” and listening to a special-mission message from Bear Grylls. Children packed their own lunch and carried everything they needed for the day in their backpack (one of the most important tools an explorer can have), before using their map skills to find equipment and build base-camp dens. The day finished with a science texture hunt linked to materials and properties, followed by a celebration assembly where every child received their official Explorer Certificate.



Goodbye Mrs Hardy

At the end of term, we will be saying goodbye to Mrs Hardy, who currently works as a teaching assistant in UKS2. We wish Mrs Hardy and her family good luck as they relocate over the Christmas holidays. Thank you for all your hard work; you will be missed by us all!

Friends Tea with Santa

A huge thank you to our Lever House FRIEND's who planned another unforgettable Tea with Santa. There were some excellent dance moves on display in some classes and Oak Class got very creative and decorated their windows for Christmas. Of course the star of the show was Santa himself, who gave children a lovely gift each and lots of smiles. We raised a huge £1050 so thank you for all of your support.



KS2 VR Experience

Our KS2 pupils ended the term's topics with an exciting virtual reality workshop. Years 3 and 4 took part in a volcanoes workshop, which immersed them in the dramatic reality of volcanic environments while enabling them to deepen their understanding of how volcanoes work. Meanwhile, Years 5 and 6 were transported back in time to the Ancient Maya civilisation, where they gained a real sense of life during this fascinating period in history and were thoroughly excited by the experience.

The workshops were a huge hit, allowing the children to further embed their learning through engaging, real-life virtual experiences.



Primary School Applications

A reminder for primary school applications; if your child turns 4 before the 31st August 2026 you will need to apply for a primary place by **Thursday 15th January 2026**.

Sports News

Play Leaders

Well done to Isaac, Nathan, Edgar, Luca, Finley F, Finely M, Shay, Freddie, George and Jessica who took part in Play Leader training with South Ribble Sports. The children learnt how to teach playtime games during lunchtimes which they will be putting to use in our playgrounds. Well done, children!



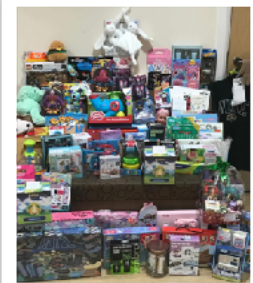
KS1 Multi-Skills Competition

Kayla, Ella, Ronnie and Noah went to the KS1 multi-skills event at Wellfield Academy. They took part in various activities involving running, throwing, bouncing and kicking. Although they didn't come home with a win, they tried their best and had fun!

Health and Wellbeing

Christmas Appeal

You may have seen on our socials that the gifts we collected for 'Cash for Kids Lancashire' were greatly received. They had run out of donations and were getting ready to pack up when Amanda arrived with all of our donations. We acknowledge that times are really tough so a HUGE thank you to all of our families who donated to this wonderful charity.



Message from Amanda:

Family Hubs & Family Support Services - During the festive period and beyond.

Family Hubs provide a range of support for parents and families, from early years help to SEND support and wellbeing services:

Local & Nearby Family Support

Lancashire Family Hubs Network – This network offers family support across the county, including parenting groups, health visitor appointments, counselling, baby feeding support, and SEND advice. You can find your nearest Family Hub and activities by entering your postcode on their site. Based on West Paddock Leyland Tel – 01772 422589 Lancashire.gov.uk

Other help available in South Ribble -

The Base and The Leyland Project - Broadfield Base Community Centre – Local community centres where you may find family groups, activities, and informal support.

Moss Side Community Centre – Another community venue that can signpost to support services.

Tip: Over winter many community hubs run warm spaces, coffee mornings, or family drop-ins — check their social media or phone ahead for Christmas/weekend openings.

Food Banks & Emergency Food Support

 Leyland Food Bank

St Mary's Community Centre – Based here, Leyland Food Bank provides emergency food parcels for local families; usually open weekdays and by referral (from agencies, schools, Citizens Advice, health visitors, etc.). stmaryscentre.net

Important Christmas Note: Food banks usually change hours around Christmas and New Year. It's a good idea to check before travelling — referrals and collections usually need to happen before the week of Christmas. Ask about extended festive packages or extra treats too (many services try to do this).

Mental Health & Wellbeing Support

Local Support Groups & Services

Lancashire Mind (county-wide charity) offers mental health information, advice, workshops, and strategies to support wellbeing.

<https://www.lancashiremind.org.uk/>

Crisis support: If anyone is in immediate distress or suicidal, contact Samaritans (116 123) or NHS 111 / 24/7 mental health helplines — these run through the holidays.

Extra Christmas Help & Practical Tips

Holiday Activities & Food (HAF) Programmes: South Ribble and Lancashire councils run holiday programmes that include free activities and food for children during school breaks (including winter). <https://southribble.gov.uk/families-young-people/haf>

Council & Citizens Advice Support: For help with benefits, heating costs, energy vouchers, and emergency funds over Christmas, contact South Ribble Borough Council or Citizens Advice South Ribble directly (they can do referrals to food banks, Household Support Fund help, fuel vouchers, etc.). Citizens Advice – 0808 278 7880, South Ribble Borough Council –

<https://southribble.gov.uk/>

Local Churches & Faith Groups: Churches often organise Christmas meals, food distribution days, and companionship events — check local church notices for dates and booking info.

Office News

Welfare Vacancy

We currently have a vacancy on our welfare team. The post is for 1 hour everyday, Monday - Friday. Please speak to our school office if you are interested in applying.

Parent Pay

Can all parents please ensure that they keep their ParentPay accounts up to date throughout the year. Please don't hesitate to contact the school office with any queries.



Fundraising made Easy!

Please remember to use easyfundraising every time you shop online! Over 7,000 brands will donate, so you can raise FREE donations for us no matter what you're buying. These donations really help us out, so please sign up if you haven't yet. **It's easy and FREE!**



You can get started at https://www.easyfundraising.org.uk/causes/friends-of-lever-house-primary-school/?utm_campaign=raise-more&utm_medium=email&utm_content=rm-en-n2

Pupil Premium/Free School Needs

Please have a read of our Pupil Premium page on our new website to see if your children are eligible for Free School Meals and Pupil Premium funding. All children in EYFS/Y1 and Y2 are entitled to Universal Free School Meals but they may be eligible for Pupil Premium funding as well (<https://www.leverhouse.net/page/?title=Pupil+Premium&pid=19>)

The link to apply is: https://www21.apps.lancashire.gov.uk/w/webpage/2047GBLSM1?context_record_id=1839187&webpage_token=0d4327ceb6a7b04a99393221d0f6edb03a22a2f3c06284eb6c6190a495b3f070

We are a Nut Free School

Like most schools, Lever House is a nut free school. We have several staff members and pupils who are allergic to nuts and could have a serious reaction if they came into contact with them. **Please remember not to send any nut products to school, including Nutella.**



Key Dates:

(Emails for all class/cohort events will be sent to relevant classes nearer the time)

December:

Friday 19th: School closes at 3:20pm (**THERE IS NO AFTER SCHOOL CLUB**)

January:

Monday 5th: School reopens to all pupils

Monday 12th: UKS2 Open Classrooms (after school)

Friday 23rd: Y5 Assembly @ 9:15

Friday 30th: Y5/Y6 trip to Jodrell Bank

February:

Monday 2nd: EYFS visit to St Ambrose Church

Tuesday 3rd: Y5 visit to Worden to watch 'Annie' (afternoon)

Friday 6th: Horse Chestnut Class Assembly @ 9:15

Monday 9th: EYFS/KS1 Open Classrooms (after school)

Tuesday 10th - Friday 13th: Y6 residential to Tower Wood

Friday 13th: School closes for half term

Monday 23rd: School opens to all pupils

Tuesday 24th: Class Photographs

Monday 23rd - Friday 27th: Whole School Art Week

Friday 27th: KS1 Enrichment, 'Fire, Fire'

March:

Wednesday 4th:	Parents' Evening
Thursday 5th:	World Book Day - Dress Up (Book Character)
Friday 6th:	Non-Uniform Day - Chocolate Donations
Thursday 12th:	Y6 Assembly @ 9:15
Tuesday 17th:	LKS2 Open Classrooms (after school)
Thursday 19th:	Y3 Trip to Cuerden Valley
Friday 20th:	Elm Class Assembly @9.15am
Tuesday 24th - Wednesday 25th:	Y4 residential to Hothersall Lodge
Friday 27th:	EYFS Class Assembly @9.15am
Friday 27th:	School closes for the Easter Holidays (NO AFER SCHOOL CLUB)